

EAST COAST SHIELDING

HONEYCOMB ALUMINUM VENT PANELS 210 SERIES



East Coast Shielding aluminum shielded air vent panels are fabricated from an aluminum honeycomb medium installed in an aluminum frame. The honeycomb provides high levels of shielding with a minimum resistance to air flow.

APPLICATIONS:

East Coast Shielding honeycomb vents are recommended for installation in electronic equipment enclosures that require high levels of EMI shielding while allowing for adequate ventilation. East Coast Shielding honeycomb vents can be installed in applications requiring shielding on either the inlet or outlet air flows.

AVAILABLE CONFIGURATIONS:

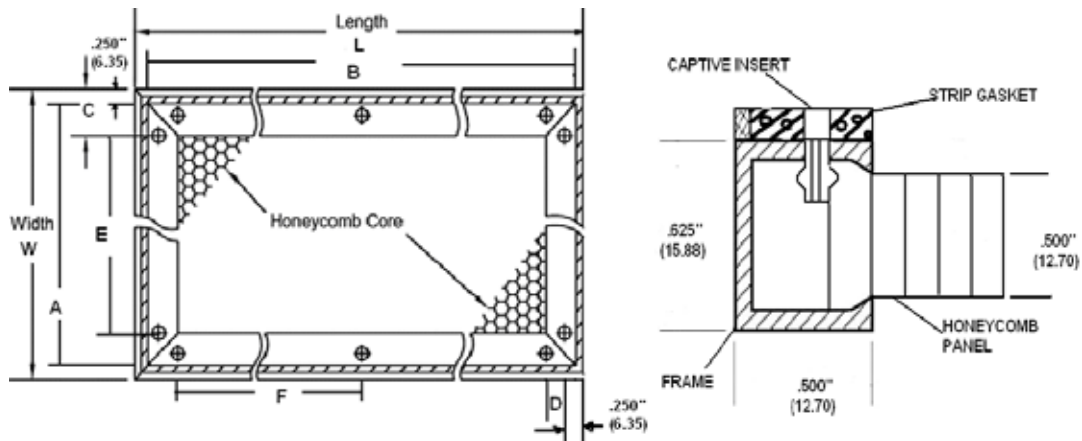
East Coast Shielding honeycomb vents are typically constructed of 0.500" (12.70) thickness, 90 degree aluminum honeycomb, with a 0.125" (3.18) cell size. The honeycomb is also available in 0.250" (6.35) thickness and cell sizes of 0.062" (1.57) and 0.188" (4.78). For drip proof construction, the cells are also available slanted at 30, 45 and 60 degrees from the horizontal. For mounting, the panels are available with captive inserts, through holes or no holes. The completed assembly can be chromate conversion coated or tin plated for protection. East Coast Shielding honeycomb vents are supplied with an attached mesh, strip, or conductive silicone fabricated gasket. For shapes, sizes and materials not listed, please contact East Coast Shielding for additional information.

MATERIAL SPECIFICATIONS

FRAME	Aluminum alloy 6063-T4 per QQ-A-200/8
HONEYCOMB	MIL-C-7438
FASTENER	Aluminum captive insert, 8-32 UNC-3B
CHROMATE FINISH	MIL-C-5541C
TIN-PLATING	MIL-T-10727

EMI Shielding Performance: 1/8 Cell Size, 1/2 Thick

Standard Honeycomb Finish	H-Field	E-Field	Plane Wave	
	100kHz	10MHz	1 GHz	10 GHz
Chem Film	40 dB	75 dB	60 dB	40 dB
Tin	70 dB	125 dB	100 dB	80 dB
Nickel	75 dB	130 dB	115 dB	95 dB
Cross-Cell Honeycomb Finish	H-Field	E-Field	Plane Wave	
	100kHz	10MHz	1 GHz	10 GHz
Chem Film	60 dB	105 dB	90 dB	80 dB



OVERALL DIMENSIONS		EFFECTIVE AIR FLOW AREA			FRAME DIMENSIONS		HOLE SPACING		NO. FASTENERS		PART NUMBER
							SIDE (W)	SIDE (L)	SIDE W	SIDE L	
W	L	IN (CM)	A	B	C	D	E	F			
3(76.20)	3(76.20)	4	2(50.80)	2(50.80)	1.25(31.75)	1.25(31.75)	-	-	1	1	210-0001
4(101.60)	4(101.60)	9(58)	3(76.20)	3(76.20)	1.75(44.45)	1.75(44.45)	-	-	1	1	210-0002
4(101.60)	6(152.40)	15(97)	3(76.20)	5(127.00)	1.75(44.45)	1.00(25.40)	-	3.50(88.90)	1	2	210-0003
4(101.60)	8(203.20)	21(135)	3(76.20)	7(177.80)	1.75(44.45)	0.75(19.05)	-	3.00(76.20)	1	3	210-0004
4(101.60)	12(304.80)	33(213)	3(76.20)	11(279.40)	1.75(44.45)	1.25(31.75)	-	3.00(76.20)	1	4	210-0005
5(127.00)	5(127.00)	16(103)	4(101.60)	4(101.60)	2.25(57.15)	0.75(19.05)	-	3.00(76.20)	1	2	210-0006
5(127.00)	7(177.80)	24(155)	4(101.60)	6(152.40)	2.25(57.15)	1.50(38.10)	-	3.50(88.90)	1	2	210-0007
5(127.00)	10(254.00)	36(232)	4(101.60)	9(228.60)	2.25(57.15)	1.25(31.75)	-	3.50(88.90)	1	3	210-0008
6(152.40)	6(152.40)	25(161)	5(127.00)	5(127.00)	1.00(25.40)	1.00(25.40)	3.50(88.90)	3.50(88.90)	2	2	210-0009
6(152.40)	8(203.20)	35(226)	5(127.00)	7(177.80)	1.25(31.75)	0.75(19.05)	3.00(76.20)	3.00(76.20)	2	3	210-0010
6(152.40)	12(304.80)	55(355)	5(127.00)	11(279.40)	1.00(25.40)	1.25(31.75)	3.50(88.90)	3.00(76.20)	2	4	210-0011
6(152.40)	18(457.20)	85(548)	5(127.00)	17(431.80)	1.00(25.40)	1.25(31.75)	3.50(88.90)	3.75(95.25)	2	5	210-0012
7(177.80)	7(177.80)	36(232)	6(152.40)	6(152.40)	1.50(38.10)	1.50(38.10)	3.50(88.90)	3.50(88.90)	2	2	210-0013
7(177.80)	10(254.00)	54(348)	6(152.40)	9(228.60)	1.50(38.10)	1.25(31.75)	3.50(88.90)	3.50(88.90)	2	3	210-0014
7(177.80)	14(355.60)	78(503)	6(152.40)	13(330.20)	1.50(38.10)	1.50(38.10)	3.50(88.90)	3.50(88.90)	2	4	210-0015
8(203.20)	8(203.20)	49(316)	7(177.80)	7(177.80)	2.00(50.80)	0.75(19.05)	3.50(88.90)	3.00(76.20)	2	3	210-0016
8(203.20)	12(304.80)	77(497)	7(177.80)	11(279.40)	0.75(19.05)	1.25(31.75)	3.00(76.20)	3.00(76.20)	3	4	210-0017
8(203.20)	16(406.40)	105(677)	7(177.80)	15(381.00)	0.75(19.05)	1.25(31.75)	3.00(76.20)	3.25(82.55)	3	5	210-0018
10(254.00)	10(254.00)	81(522)	9(228.60)	9(228.60)	1.25(31.75)	1.25(31.75)	3.50(88.90)	3.50(88.90)	3	3	210-0019
10(254.00)	14(355.60)	117(755)	9(228.60)	13(330.20)	1.25(31.75)	1.50(38.10)	3.50(88.90)	3.50(88.90)	3	4	210-0020
10(254.00)	18(457.20)	153(987)	9(228.60)	17(431.80)	1.25(31.75)	1.25(31.75)	3.50(88.90)	3.75(95.25)	3	5	210-0021
12(304.80)	12(304.80)	121(780)	11(279.40)	11(279.40)	1.25(31.75)	1.25(31.75)	3.00(76.20)	3.00(76.20)	4	4	210-0022
12(304.80)	16(406.40)	165(1064)	11(279.40)	15(381.00)	1.25(31.75)	1.25(31.75)	3.00(76.20)	3.25(82.55)	4	5	210-0023
12(304.80)	20(508.00)	209(1348)	11(279.40)	19(482.60)	1.25(31.75)	1.00(25.40)	3.00(76.20)	3.50(88.90)	4	6	210-0024
12(304.80)	24(609.60)	253(1632)	11(279.40)	23(584.20)	1.25(31.75)	1.25(31.75)	3.00(76.20)	3.50(88.90)	4	7	210-0025